

## TG 系列手拉阀

### ● 产品特性

- 1、结构紧凑，外型精美；
- 2、操作方便、使用寿命长；
- 3、广泛用于气动设备的操作装置中。



TG2311H

TG2511H

### ● 订购代码

<b>TG</b>	—	<b>25</b>	—	<b>2</b>	—	<b>1H</b>	—	<b>06</b>
系列		功能 23 : 二位三通 25 : 二位五通		接口代号 1 : 1/8 2 : 1/4 3 : 3/8 4 : 1/2		控制形式 手拉式		接管口径 06 : G1/8 08 : G1/4 10 : G3/8 15 : G1/2

### ● 技术参数

规格	项目	功能	接管口径	通径 (mm)	工作介质	使用压力范围	控制方式	润 滑	介质温度
TG2311H-06	二位三通		G1/8	6	空气	0 ~ 1.0MPa	手动式	不需要	-5 ~ 60°C
TG2321H-08			G1/4	8					
TG2331H-10			G3/8	10					
TG2341H-15			G1/2	15					
TG2511H-06	二位五通		G1/8	6					
TG2521H-08			G1/4	8					
TG2531H-10			G3/8	10					
TG2541H-15			G1/2	15					

### ● 外形尺寸

二位三通手拉阀

二位五通手拉阀

TG2311H-06

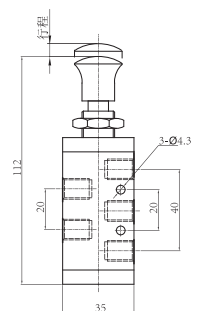
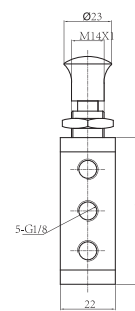
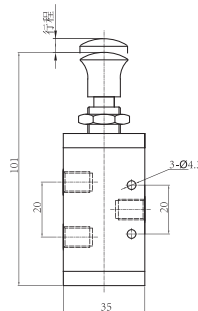
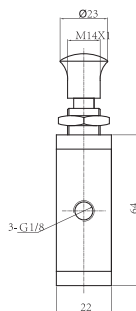
TG2511H-06



TG2311H-06



TG2511H-06



**TG 系列手拉阀**

二位三通手拉阀



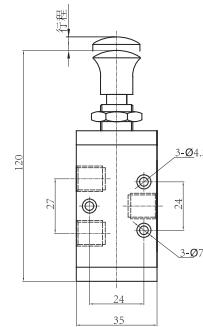
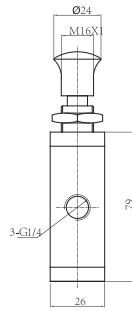
TG2321H-08

二位五通手拉阀

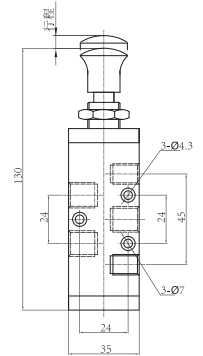
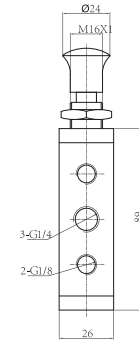


TG2521H-08

TG2321H-08



TG2521H-08



二位三通手拉阀



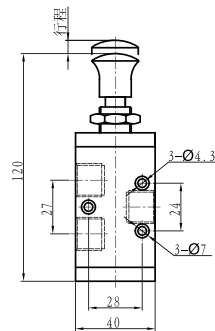
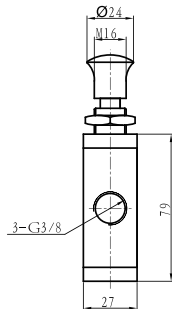
TG2331H-10

二位五通手拉阀

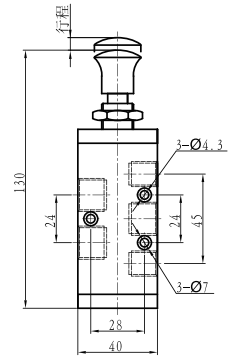
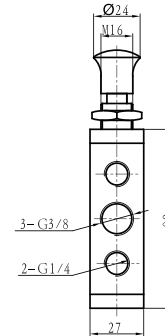


TG2531H-10

TG2331H-10



TG2531H-10



二位三通手拉阀



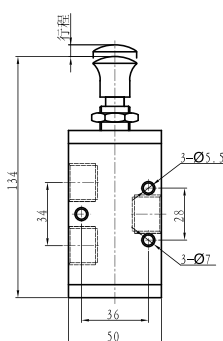
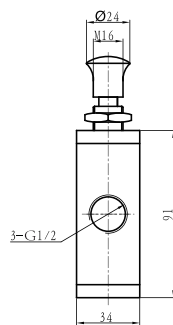
TG2341H-15

二位五通手拉阀



TG2541H-15

TG2341H-15



TG2541H-15

